

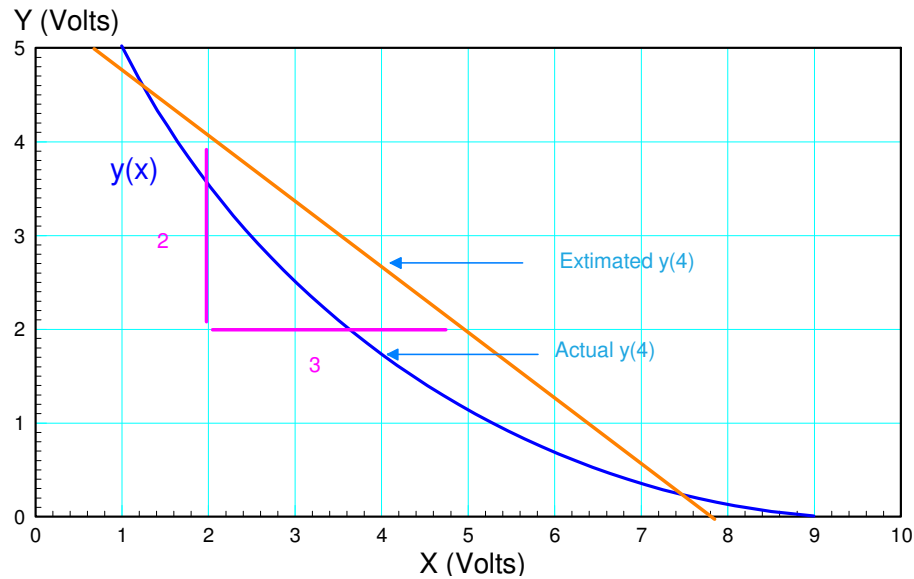
# ECE 321 - Quiz #3 - Name \_\_\_\_\_

Calibration, Active Filters, Poles & Zeros. Due midnight, April 22, 2020

Calculators, Matlab, tarot cards permitted. Just not someone else.

1) Calibration: Given  $y(x)$  shown below, determine the following:

Straight-line approximation for $y = f(x)$	calibration function $y = ax + b$	actual $y$ when $x=4$	estimated $y$ when $x=4$
show on graph	<b><math>y = -0.667x + 5.33</math></b>	<b>1.8</b>	<b>2.67</b>



Step 1) Draw a line to approximate  $y(x)$  (shown in orange)

Step 2) Determine the slope

$$\text{slope} = \left( \frac{\text{change in } y}{\text{change in } x} \right) = \left( \frac{4-2}{2-5} \right) = -0.667$$

Step 3) Determine the offset. Plug in a point (any point). Pick  $(x = 5, y = 2)$

$$y = ax + b$$

$$2 = (-0.667)(5) + b$$

$$b = 5.333$$

so

$$y = -0.667x + 5.33$$

2) Calibration: A thermistor has the following resistance vs. temperature

degrees C (T)	0C	10C
Ohms (x)	4695.4 Ohms	2832.4 Ohms

2a) Use endpoint calibration to determine the resistance vs. temperature between 0C and 10C in the form of

$$T = ax + b \quad x = \text{resistance in Ohms}$$

2b) From your curve fit, determine the temperature if the resistance is R ohms where

- $R = 1000 + 100 * (\text{your birth month}) + (\text{birth date})$ . May 14th gives  $R = 1514$  Ohms.

a	b	R 1000 + 100 * mo + day	temperature when x = R
<b>-0.00537</b>	<b>25.2</b>	<b>1514</b>	<b>17.07C</b>

$$y = ax + b$$

Step 1) Determine the slope

$$\text{slope} = \left( \frac{\text{change in } y}{\text{change in } x} \right) = \left( \frac{10C - 0C}{2832.4 - 4695.4} \right) = -0.00537 \frac{\text{degree}}{\text{ohm}}$$

Step 2) Determine the offset (b). Plug in a point

$$T = ax + b$$

$$0C = \left( -0.00537 \frac{C}{\Omega} \right) (4695.4\Omega) + b$$

$$b = 25.203\Omega$$

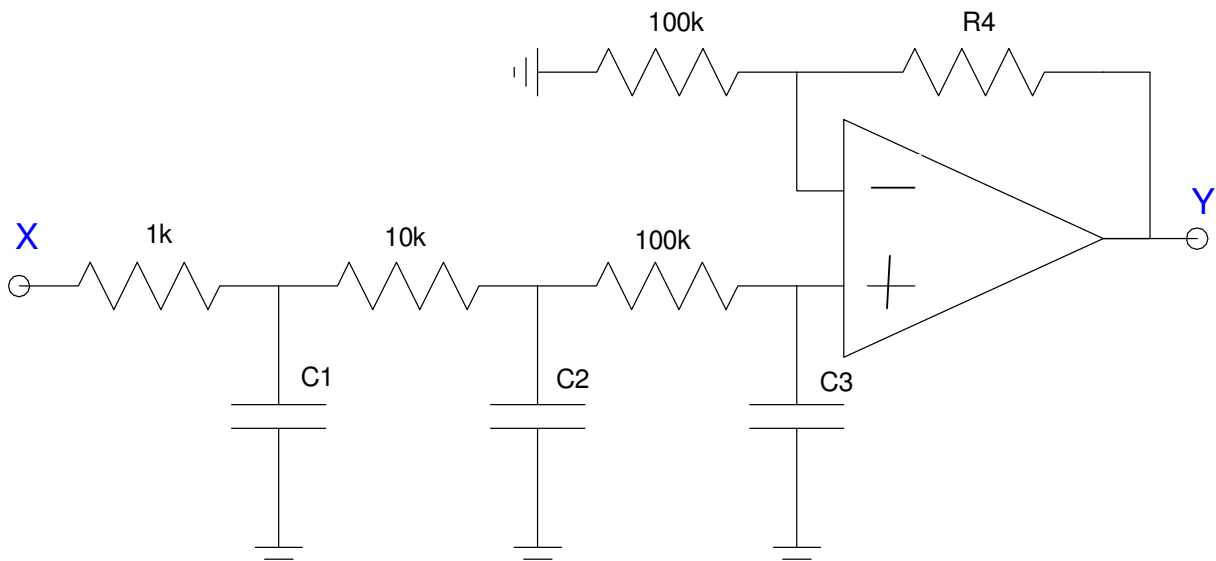
3) Active Filters. Real Poles. Find R and C to implement

$$Y = \left( \frac{10,000}{(s+10)(s+m)(s+d)} \right) X$$

where

- m is your birth month (1..12), and
- d is your birth date (1..31)

m birth month	d birth day	C1	C2	C3	R4
<b>5</b>	<b>14</b>	<b>100uF</b>	<b>20uF</b>	<b>0.714uF</b>	<b>1.3285M</b>



$$\left( \frac{1}{R_1 C_1} \right) = 10$$

$$R_1 = 1k$$

$$C_1 = 100\mu F$$

$$\left( \frac{1}{R_2 C_2} \right) = m = 5$$

$$R_2 = 10k$$

$$C_2 = 20\mu F$$

$$\left( \frac{1}{R_3 C_3} \right) = d = 14$$

$$R_3 = 100k$$

$$C_3 = 0.714\mu F$$

DC gain

$$\left( \frac{10,000}{(s+10)(s+m)(s+d)} \right)_{s=0} = 14.285 = \left( 1 + \frac{R_4}{100k} \right) \quad R_4 = 1.3285M$$

4) Active Filters: Complex Poles: Find R and C to implement

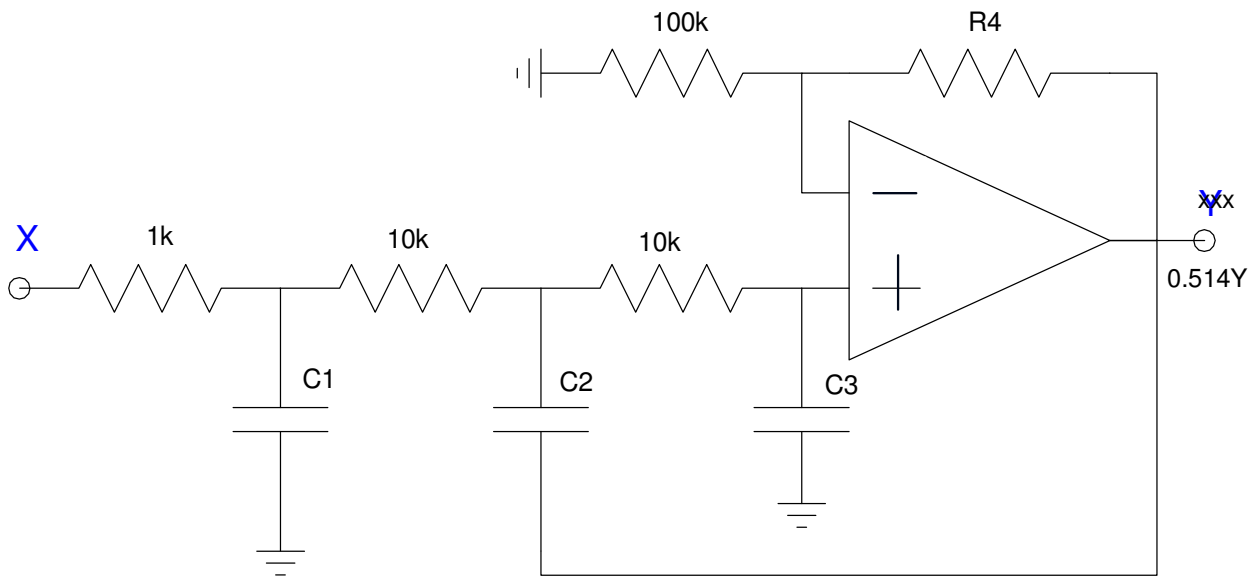
$$Y = \left( \frac{10,000}{(s+10)(s+m+jd)(s+m-jd)} \right) X$$

$$Y = \left( \frac{10,000}{(s+10)(s+5+j14)(s+5-j14)} \right) X = \left( \frac{10,000}{(s+10)(s+14.87 \angle \pm 70.34^\circ)} \right) X$$

where

- m is your birth month (1..12), and
- d is your birth date (1..31)

m	d	C1	C2	C3	R4
<b>5</b>	<b>14</b>	<b>100uF</b>	<b>6.72uF</b>	<b>6.72uF</b>	<b>132.7k</b>



$$\left( \frac{1}{R_1 C_1} \right) = 10$$

$$R_1 = 1k$$

$$C_1 = 100\mu F$$

$$\left( \frac{1}{R_2 C_2} \right) = 14.87$$

$$R_2 = 10k$$

$$C_2 = 6.72\mu F$$

$$3 - k = 2 \cos(70.34^\circ)$$

$$k = 2.327 = 1 + \frac{R_4}{100k}$$

$$R_4 = 132.7k$$

Note: The output has a DC gain of 2.327 (vs. 4.52249), meaning the output is actually 0.514Y

5) Filters: Assume X and Y are related by the transfer function

$$Y = \left( \frac{100}{(s+m)(s+d)} \right) X = \left( \frac{100}{(s+5)(s+14)} \right) X = \left( \frac{100}{s^2+19s+70} \right) X$$

where

- m is your birth month (1..12) and
- d is your birth day (1..31).

a) What is the differential equation relating x and y?

$$y'' + 19y' + 70y = 100x$$

b) Determine y(t) assuming

$$x(t) = 3 + 4 \cos(5t) + 6 \sin(5t)$$

m	d	diffy eq	y(t)
<b>5</b>	<b>14</b>	<b><math>y'' + 19y' + 70y = 100x</math></b>	<b><math>4.825 - 3.529 \cos(5t) + 5.882 \sin(5t)</math></b>

$$x(t) = 3$$

$$Y = \left( \frac{100}{(s+5)(s+14)} \right)_{s=0} \cdot (3)$$

$$Y = 4.285$$

$$x(t) = 4 \cos(5t) + 6 \sin(5t)$$

$$s = j5$$

$$X = 4 - j6$$

$$Y = \left( \frac{100}{(s+5)(s+14)} \right)_{s=j5} \cdot (4 - j6)$$

$$Y = -3.529 - j5.882$$

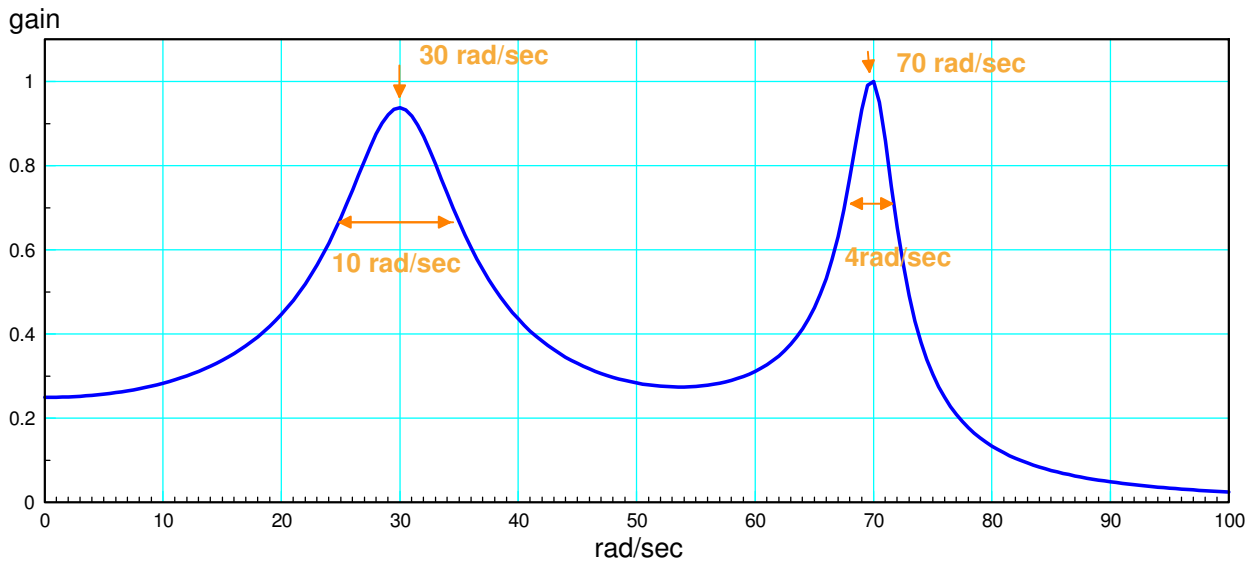
$$y(t) = -3.529 \cos(5t) + 5.882 \sin(5t)$$

The total answer is DC + Ac

$$y(t) = 4.825 - 3.529 \cos(5t) + 5.882 \sin(5t)$$

6) Determine the poles of a filter with the following gain vs. frequency (Bode) plot.

pole 1	pole 2
<b><math>-5 + j30, -5 - j30</math></b>	<b><math>-2 + j70, -2 - j70</math></b>



1st pole:

max gain = 30 rad/sec = complex part of pole

bandwidth (70% gain) = 10 rad/sec = 2 x real part of pole

pole =  $-5 + j30, -5 - j30$

2nd pole

max gain at 70 rad/sec = complex part of pole

bandwidth = 4 rad/sec = 2 x real part of pole

pole =  $-2 + j70$